

# ShapeBots

## Shape-changing Swarm Robots

github.com  
ryosuzuki/shapebots

Ryo Suzuki  
Clement Zheng  
Yasuaki Kakehi  
Tom Yeh  
Ellen Yi-Luen Do  
Mark Gross  
Daniel Leithinger



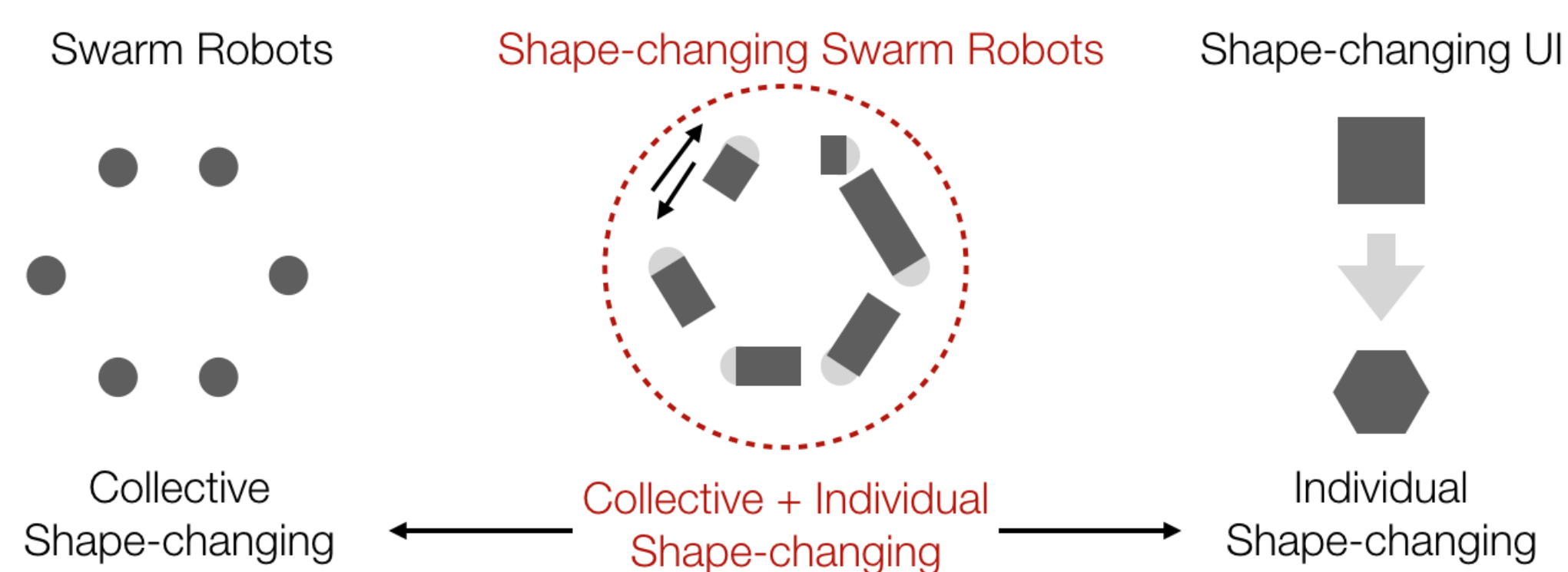
University of Colorado  
Boulder



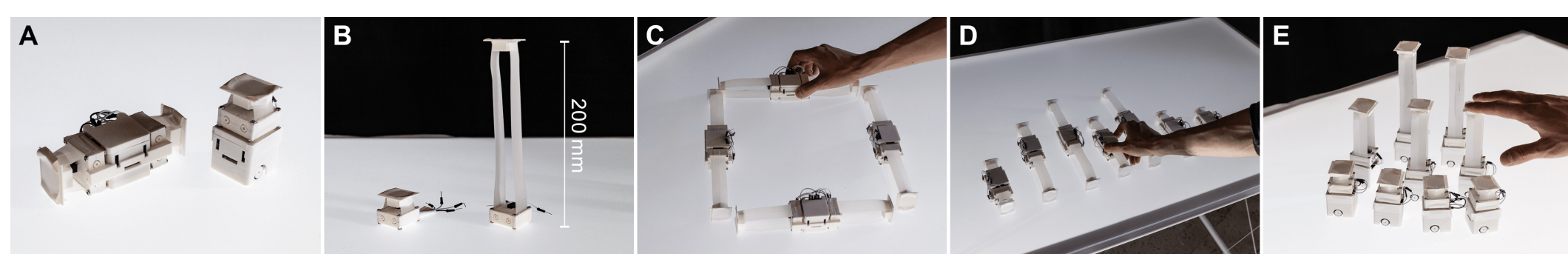
THE UNIVERSITY OF TOKYO

## Shape-changing Swarm Robots

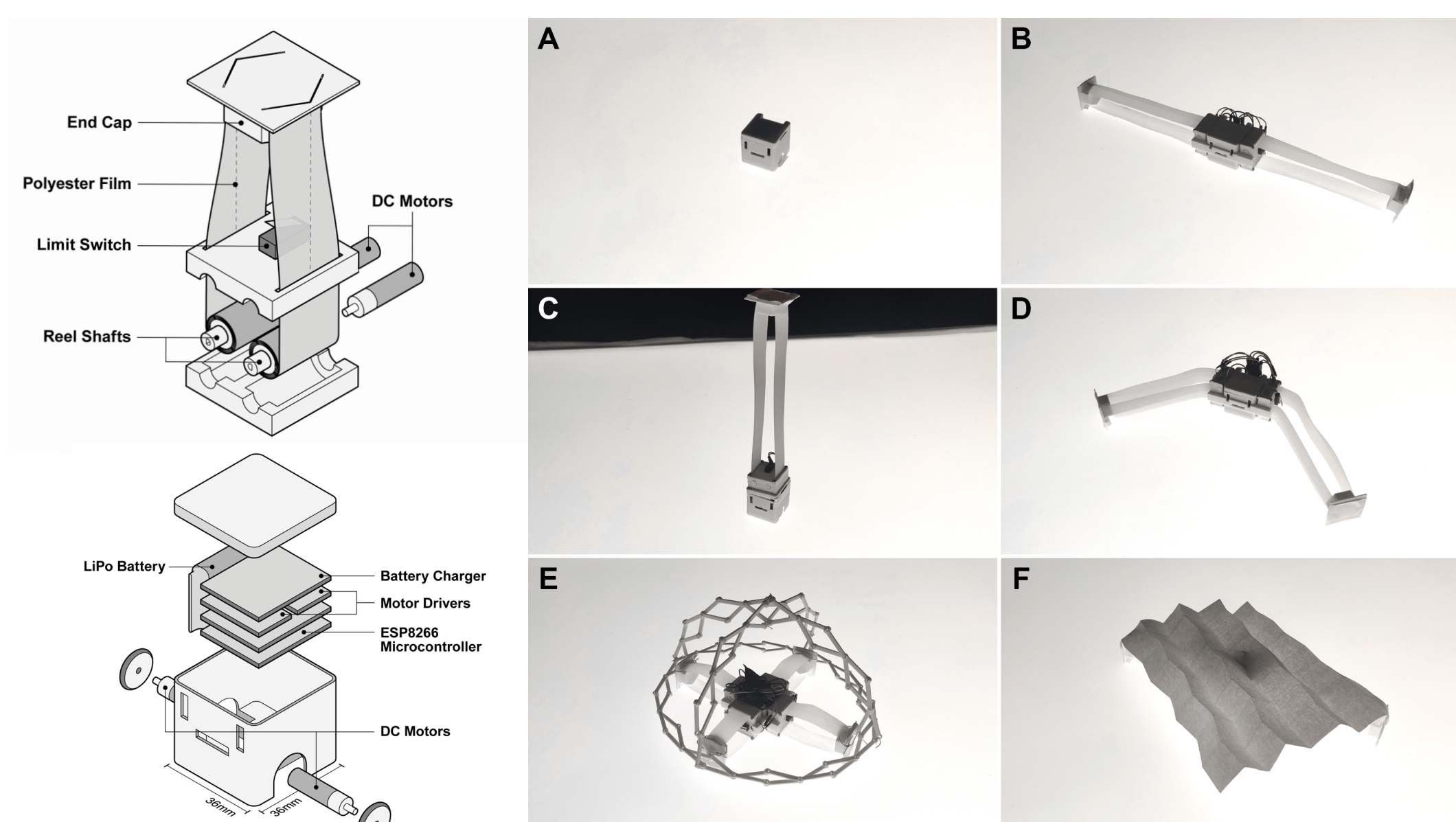
This paper introduce **shape-changing swarm robots**, a swarm of self-transformable robots that can both **individually** and **collectively** change their shapes.



## ShapeBots

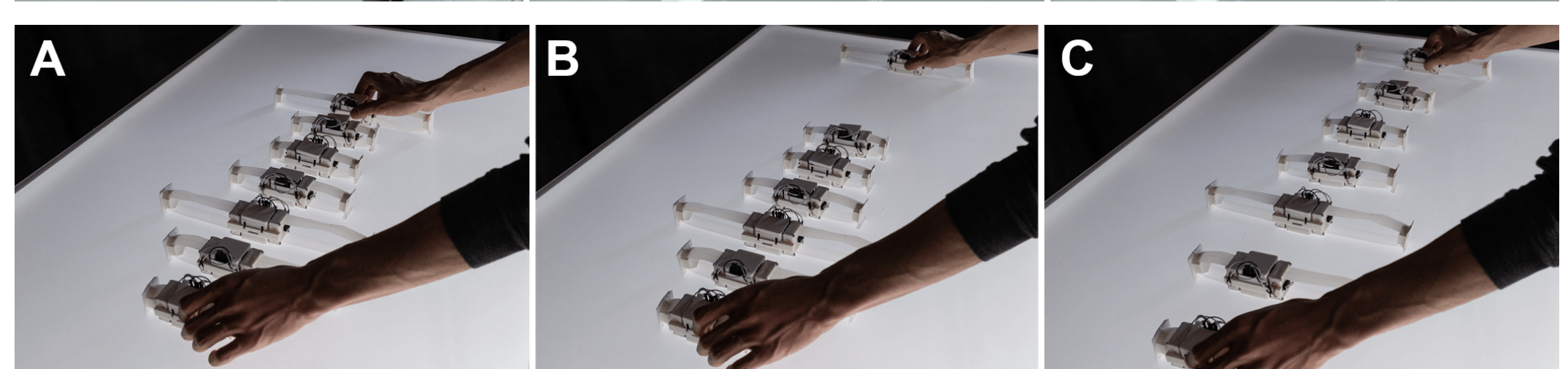


ShapeBots is a prototype system of shape-changing swarm robots, by leveraging highly extendable miniature reel linear actuator (extend from 2cm to 20cm, 3cm x 3 cm size).

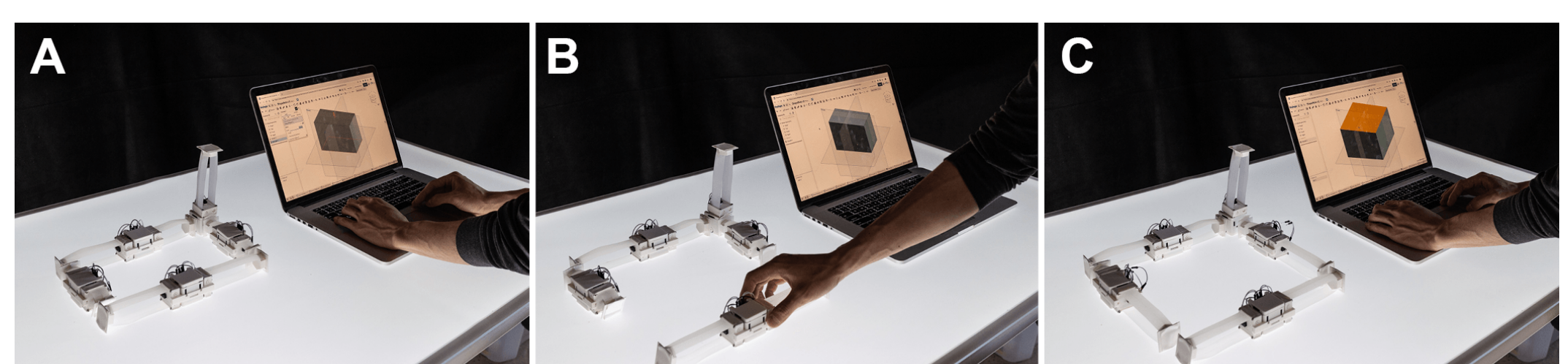


## Applications Scenarios

Dynamic Data Physicalization



## Interactive Tangible Display



## Ambient Assistant

